

# 185 YEARS OF QUALITY

Our Welding and WELDING Filler Materials are produced according to the procedures of drawing and scalping, by means of which there are assured our welded materials - clean and bright wire surface on one hand, as well as faultless quality of welded joints, on the other.

Quality of our welding and filler materials is daily controlled in our own laboratories.

#### We are Manufacturing:

- Wire for Welding and Hard Soldering (Brazing)
- Rods for Welding and Hard Soldering (Brazing)
- Wire for Metallizing
- According to the Agreement we are producing also wires of dimensions not listed in this Prospectus

Welding wires and rods are packed in plastic foil - polyvinyl bags - with siccative medium added

Quality and the assortment of welding materials are marked within the packed unit by means of characteristic coloured label.

OUR WELDING MATERIALS  
HAVE ATTESTATION AT:





PARTIZANSKA 38  
2310 SLOVENSKA BISTRICA  
SLOVENIJA

P: 00386 2 84 53 109  
P: 00386 2 84 53 273  
F: 00386 2 84 53 248  
E: ALUMAT@ALUMAT.SI

# ALUMINIUM MILLENIUM

## WELDING FILLER METAL

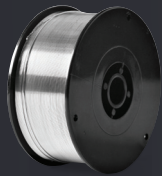


 **ALUMAT**

PRODUCT CATALOGUE

## ALUMINIUM MILLENIUM / WELDING FILLER METAL

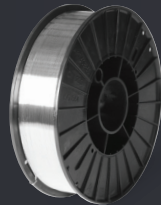
## SPOOL S 100



**DIMENSIONS OF SPOOL:**  
outside diameter 100 mm  
inside diameter 16 mm  
width 45 mm

weight of coiling 0,5 kg  
dimension of coiling  
Ø 0,8 - 1,0 - 1,2 - 1,6 mm

## SPOOL S 200



**DIMENSIONS OF SPOOL:**  
outside diameter 200 mm  
inside diameter 52 mm  
width 45 mm

weight of coiling 2,0 kg  
dimension of coiling  
Ø 0,8 - 1,0 - 1,2 - 1,6 mm

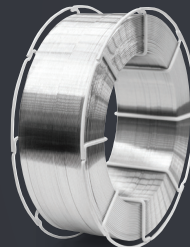
## SPOOL S 300



**DIMENSIONS OF SPOOL:**  
outside diameter 300 mm  
inside diameter 52 mm  
width 100 mm

weight of coiling 6,0 kg  
dimension of coiling  
Ø 0,8 - 1,0 - 1,2 - 1,6 - 2,4 mm

## SPOOL B 300



**DIMENSIONS OF SPOOL:**  
outside diameter 300 mm  
inside diameter 190 mm  
width 98 mm

weight of coiling 7,0 kg  
dimension of coiling  
Ø 0,8 - 1,0 - 1,2 - 1,6 - 2,4 mm

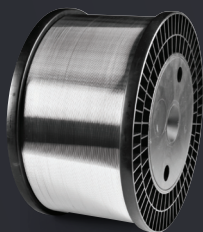
## SPOOL BS 300



**DIMENSIONS OF SPOOL:**  
outside diameter 300 mm  
inside diameter 52 mm  
width 98 mm

weight of coiling 7,0 kg  
dimension of coiling  
Ø 0,8 - 1,0 - 1,2 - 1,6 - 2,4 mm

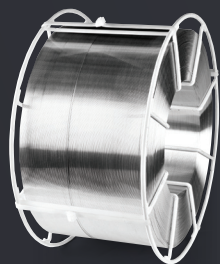
## SPOOL S 350



**DIMENSIONS OF SPOOL:**  
outside diameter 350 mm  
inside diameter 52 mm  
width 185 mm

weight of coiling 20 kg  
dimension of coiling  
Ø 1,2 - 1,6 - 2,4 mm

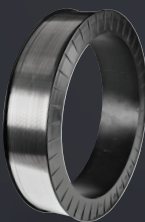
## SPOOL B 400



**DIMENSIONS OF SPOOL:**  
outside diameter 400 mm  
inside diameter 190 mm  
width 200 mm

weight of coiling 40 kg  
dimension of coiling  
Ø 1,2 - 1,6 - 2,4 mm

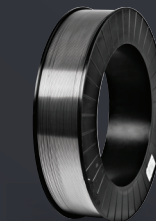
## SPOOL SH 390 K



**DIMENSIONS OF SPOOL:**  
outside diameter 390 mm  
inside diameter 310 mm  
width 79 mm

weight of coiling 7 kg  
dimension of coiling  
Ø 1,2 - 1,6 - 2,0 - 2,4 - 3,2 mm

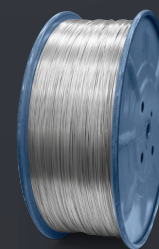
## SPOOL SH 460



**DIMENSIONS OF SPOOL:**  
outside diameter 460 mm  
inside diameter 319 mm  
width 91 mm

weight of coiling 18 kg  
dimension of coiling  
Ø 1,2 - 1,6 - 2,0 - 2,4 - 3,2 mm

## SPOOL TYPE 760



**DIMENSIONS OF SPOOL:**  
outside diameter 760 mm  
inside diameter 300 mm  
width 270 mm

weight of coiling 120 - 140 kg  
dimension of coiling  
Ø 1,6 - 2,5 - 3,17 - 4,0 mm

## SQUARED DRUMS



**DIMENSIONS OF DRUM:**  
height 900 mm  
width 500 mm

weight of coiling 140 kg  
dimension of coiling  
Ø 1,0, 1,2 - 1,6 mm

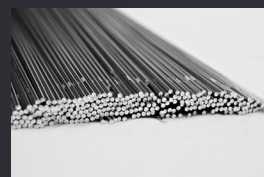
## ROUND DRUMS



**DIMENSIONS OF DRUM:**  
height 800 mm  
width 500 mm

weight of coiling 80 kg  
dimension of coiling  
Ø 1,0, 1,2 - 1,6 mm

## WELDING RODS



weight of packaging  
2,5 - 5,0 - 5,0 - 10 kg

dimension of roads  
Ø 0,16 - 2,0 - 2,4 - 3,2 - 4,0  
- 5,0 x 1000 mm



